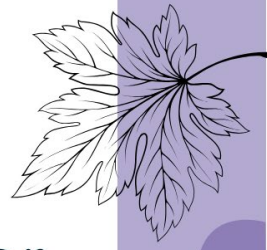




# March Newsletter



*A message  
from Ellen*



Hi everyone, March is an exciting month at the Foundation! Along with our **School Options Workshop**, **NeuroWild event**, and **free speech screeners**, we're **celebrating neurodiversity!** In honour of Neurodiversity Celebration Week, we've partnered with **Emotional Support Buddy** to bring you an exclusive **Neurodiverg-Ant buddy!** But embracing neurodiversity isn't limited to just one week—it's something we value all year round. Check out the details below—we can't wait for you to join us!

*Celebrating  
Neurodiversity*



Neurodiversity refers to the **natural variations** in the human brain. It encompasses differences such as **autism, ADHD, dyslexia, and dyspraxia**, to name just a few! Embracing neurodiversity means **recognising and valuing these differences** as integral aspects of **human diversity**, rather than viewing them as deficits or defects to be fixed.

For many neurodivergent children, the world can sometimes feel like a place

that wasn't designed for them, which can impact their **confidence, self-esteem, and overall wellbeing**. When we **celebrate neurodiversity**, we help children **recognise their abilities** and ensure that families, educators, and communities **foster environments** where **neurodivergent children can flourish**.



The Stronger Together Foundation has partnered with **Emotional Support Buddy**, a local neurodivergent creator, to bring you an **exclusive Neurodiverg-Ant** buddy. Purchase your limited-edition hoodie or pin, plus check out our special blog posts!

[Learn more...](#)

*Parent  
Workshop*

Have you got your ticket to our first annual **School Options Workshop**? It's perfect for parents of children with additional support needs who are commencing formal schooling in 2026 or 2027. Hear from representatives from a variety of school settings.

### School Options Workshop

Wednesday 26th March, 2025  
9am-11.30am  
Castle Hill RSL (Phoenix Room)

[Book now...](#)

## Professional Workshop

Join us for a workshop on **Neurodiversity Affirming Practices** with Em Mainey, aka **NeuroWild!** Her last workshop with us was a sell-out, with glowing feedback. Tickets are selling fast, so don't miss out!



Neurodiversity Affirming Practices Workshop

26 MAR 2025 | 12:30-3:30 PM

CASTLE HILL RSL  
(PHOENIX ROOM)

[Book now...](#)

## Charity Golf Day



Registrations are now open for our **2025 Annual Charity Golf Day** at the beautiful **Lynwood Golf and Country Club!** Whether you're interested in **playing, sponsoring,** or joining us for a **delicious lunch,** there's a way for everyone to get involved! Funds raised from the event goes towards our unique **Andy Bear Club** program, which focuses on **early learning skills, social interaction,** and **confidence-building.** Your support makes all the difference!

[More info...](#)

## School Holiday Program



Our popular **Create, Play, Explore** school holiday programs are back!

These upcoming holidays, we'll be running three programs for children in **Kindy to Year 4**:

- **Mon 14th & Tues 15th April** (2 days, 9am-1pm)
- **Wed 16th & Thurs 17th April** (2 days, 9am-1pm)
- **Tues 22nd, Wed 23rd & Thurs 24th April** (3 days, 9am-1pm)

[More info...](#)

## Community Family Event



We are thrilled to be hosting another **Community Family Event** during the upcoming School Holidays! Come and celebrate the **Stronger Together Foundation's 1st Birthday** at **Lollipop's Playland** in Castle Hill! This event is for **children with disabilities, delays and neurodivergent needs and their siblings**. To help cover the cost, families are asked to pay a small fee of **\$5 per child** attending (adults are free, but tickets are still required).

[More info...](#)

## Communication screening



We've had a great response to our **FREE communication screeners** this term! The screening sessions are for children who will be starting kindergarten in 2026 or later. They take about 30 minutes and are designed to help with **early detection** of any **specific communication difficulties**. This term, the screeners are being held on **Wednesday afternoons** with one of our speech pathologists, onsite at the Foundation.

[Book now..](#)

## In the community



This year, **Castle Hill United Football Club** is offering two All Abilities programs (mixed and girls). The programs are designed for children **5-19 years old** and run throughout the winter football season (April – August), offering an **inclusive, fun and welcoming** environment for everyone. It's a great starter for children to try football and for those who prefer to play football within a **more social and less competitive environment**.

[More info...](#)



**Able with Next Athletics - Come n Try Days** are a fun, social and inclusive introduction to athletics for children, including those with a disability. Each activity is carefully adapted to meet the unique needs of every child, ensuring they can fully engage and enjoy being active.



**Come n Try Days** are being held at **Bernie Mullane Sports Complex** on Tuesday 8th and Tuesday 29th April from 4pm-5pm. Registrations are limited, so you do need to book!

[More info...](#)



*Our 2024/25 supporters*

**JDI Services Pty Ltd**  
Business Coaching | Consulting | Sales Training



CommBank  
**Staff Foundation**

**GOLDMAN PLUMBING SERVICES**



**FLEMMING GROUP**

**TOMCAT AIR**  
PERFECT YOUR SPACE



**CASTLE TOWERS**



**THE STAGE DOOR**  
PERFORMING ARTS



statewidecivil

**agenzia**  
PROPERTY INVESTMENT STRATEGISTS



[Contact us](#)