

December Newsletter



A message from Ellen



What a year it's been! Since we officially became the Stronger Together Foundation, we have continued to support over 150 families! As we start to wrap things up for 2024 (we'll be **closed from 25th December and will reopen on 6th January, 2025**), we've put together some tips for navigating the festive season with neurodivergent children. We hope that all of our families and supporters have a **wonderful Christmas and new year**, and we'll see you in 2025!

[Read more...](#)

Christmas Raffle



There's just over **one week left** to grab your tickets in our 2024 Christmas Raffle! You have the chance to **make a difference AND win one of 12 amazing prizes**, including a \$1,000 Castle Towers voucher or a \$500 Westfield voucher—perfect to help with last-minute Christmas shopping! By participating in our raffle, you're helping to support our unique group programs, enabling more families to access vital early childhood services. **Tickets are on sale now!**

[Read more...](#)

2025 Group Programs

We have a great line-up of group programs to support our families in 2025!
Contact us to secure your child's place!

Monday	Tuesday	Wednesday	Thursday	Friday
Andy Bear Club (3-5 years) 8:30am - 11:30am	Andy Bear Club (3-5 years) 8:30am - 11:30am	Sensory Kidz (6 months- 4 years) 9:30am - 11:00am	Communication Explorers (6 months- 4 years) 9:30am - 11:00am	School Ready Kidz (children starting Kindergarten in 2026) 9:30am - 11:30am
Kidz Club (Kindergarten- Year 4) 3:30pm - 5:00pm	School Ready Kidz (children starting Kindergarten in 2026) 12:30pm - 2:30pm	School Ready Kidz (children starting Kindergarten in 2026) 12:30pm - 2:30pm	Kidz Club (Kindergarten- Year 4) 3:30pm - 5:00pm	Details...

School Holiday Programs



We have **VERY** limited spots available in our upcoming school holiday programs:

Create, Play & Explore: for school-aged children in Years 1 to 4 in 2025.

- 2-day program: 7th & 8th Jan 2025
- 2-day program: 9th & 10th Jan 2025
- 3-day program: 29th, 30th & 31st Jan 2025

FULL

All programs are 9am until 1pm. You can opt in for one or multiple programs.

[Read more...](#)

Communication screening



On Tuesday 21st and Wednesday 22nd January 2025, we will be hosting **FREE** communication screeners for children who will be starting kindergarten in 2026 and beyond. The screener is designed to help with early detection of any specific communication difficulties. The screenings are individual and take 30 minutes at our location in Castle Hill.

Book your spot now!

[Book here...](#)

In the community



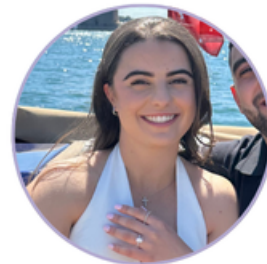
On Sunday we took our Sensory Breakout Space to the Glenhaven Carols. Our tent provides children (and adults!) with a quiet space to which they can retreat to avoid overwhelm. We will also be taking the tent to the upcoming Mayor's Children's Christmas Party at Bella Vista Farm on 15th December. Please feel free to drop by so that you and your child can enjoy a calming space with plenty of regulation tools.

Other news



We have some celebrating to do here at the Foundation! Firstly, please join us in wishing our special educator, Anne (who many of you would know through our group programs), a very Happy 60th Birthday!

We are also so excited for our wonderful speech pathologist Bianca, who recently got engaged! Congratulations Bianca!



While 2024 might have felt like a bit of a marathon in many ways, our Lead Senior Speech Pathologist, Anwyn, recently ran an ACTUAL marathon. Well done Anwyn! We look forward to seeing what running goals you smash in 2025!



And finally, we'd like to introduce you to the Foundation's Board of Directors, who recently met for the final meeting of 2024. From left: Kate Downing, Linda O'Connor, Ellen Kulbicki (our CEO) and Ramsay Zreikat. We'll share more about our board soon!



Our 2024 supporters

JDI Services Pty Ltd
Business Coaching | Consulting | Sales Training



CommBank
Staff Foundation

GOLDMAN
PLUMBING
SERVICES

TOMCAT AIR
PERFECT YOUR SPACE

FLEMMING
GROUP



CASTLE TOWERS



THE
STAGE DOOR
PERFORMING ARTS



statewidecivil

agenzia
PROPERTY INVESTMENT STRATEGISTS

